

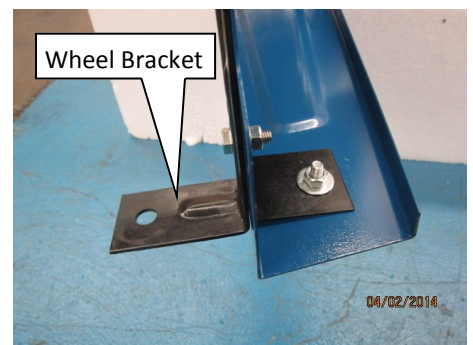
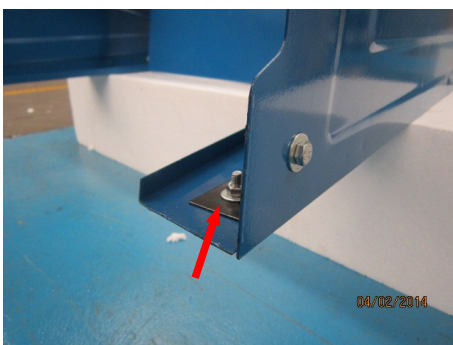
1. These are the components used in the assembly of the Stand.

2. Using these screws, washers and nuts, fit the Shelf to the Legs.



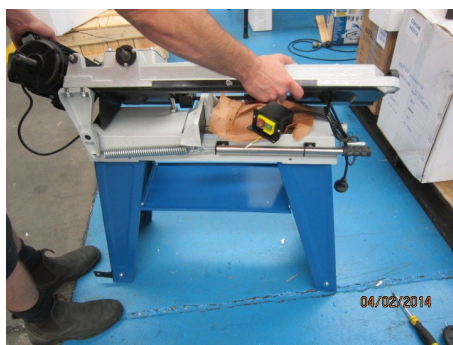
3. Lay a Leg on the floor and fix one end of the Shelf as shown. (Note: The Shelf will fit only one way—"tray" facing up). Do not fully tighten these screws yet.

4. Fix the other Leg to the Shelf, again do not fully tighten these screws.



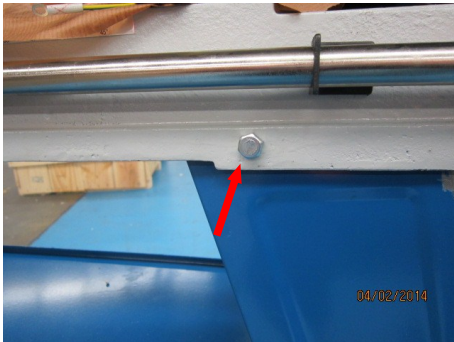
5. Fit the Corner Brackets inside a leg as shown. This is the end the Handle will be fixed to. Finger tighten these 2 bolts first, then fully tighten.

6. Fit the Corner Brackets and Wheel Bracket to the other Leg. Finger tighten these 4 bolts first, then fully tighten.



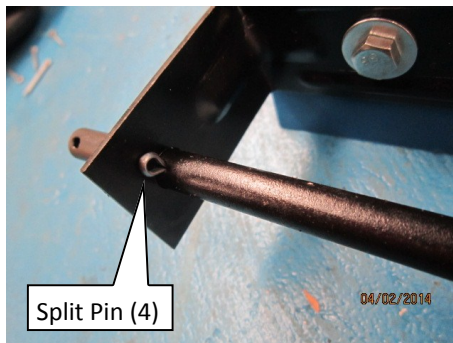
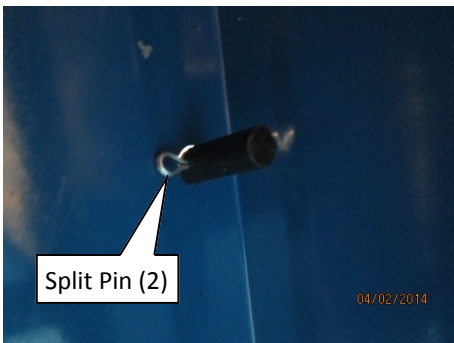
7. Turn the Saw Stand up the right way, preferably on a non slip surface. Lift the Saw on top of the Stand with 2 people ensuring the top of the Stand fits inside the Saw Base. Make sure the motor is at the end with the Wheel Bracket. Have the other person steady the Saw until all bolts are tightened as it is unstable until completed.





8. Bolt the Saw Base to the Legs as shown. Finger tighten all bolts first (6) then fully tighten. Your assistant should still be steadying the machine. You can now level the Shelf and tighten the screws. Double check all bolts and screws are tight. The machine should now be stable.

9. Fit the Handle.



10. Pin the Handle inside the Stand. Open up the ends of the Pin to stop it from falling out (see photo of Wheel (13)).

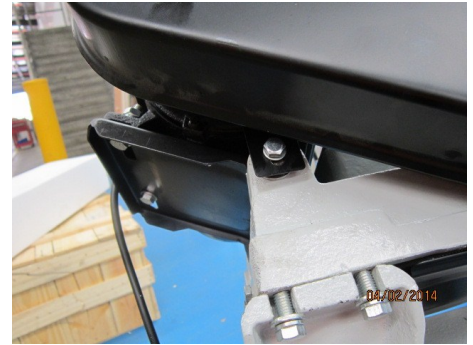
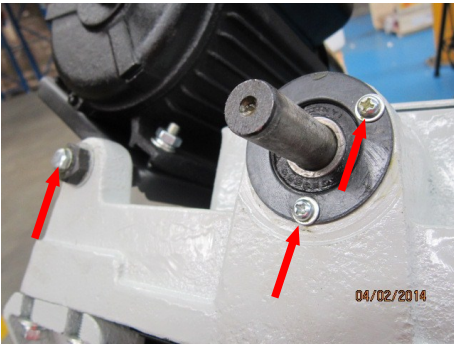
11. Fit Shaft and pin both ends as shown above.



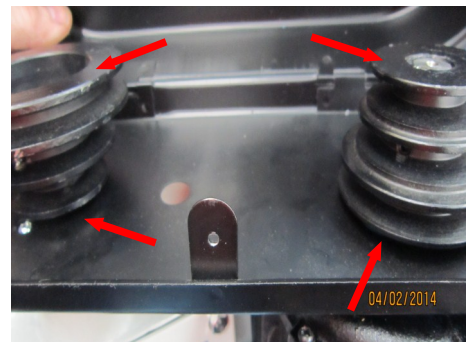
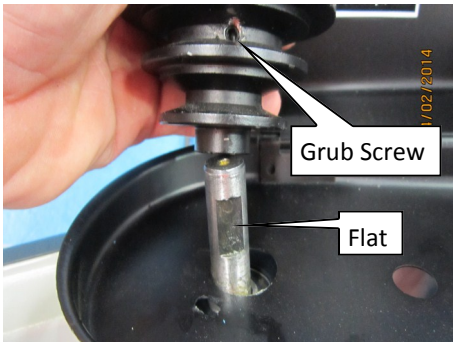
12. Fit the Wheels with this face against the Wheel Bracket.

13. Fit Wheels in place and open the Split Pins as shown.



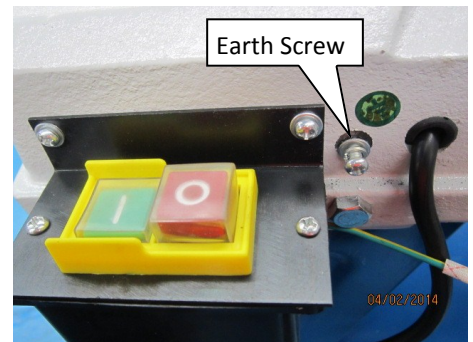
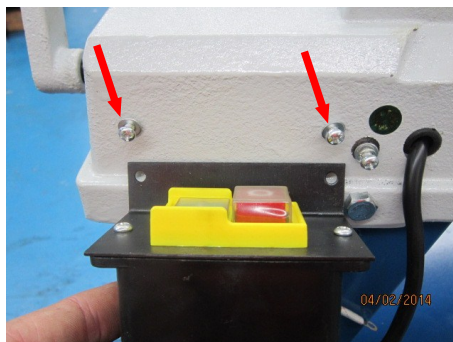


14. Using these 2 screws and 1 bolt, fit the Belt Guard as shown.



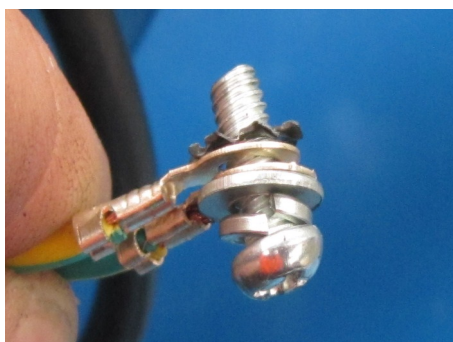
15. Fit the Motor Pulley, making sure the key is in place. Tighten the grub screw.

16. Fit the driven pulley, making sure the grub screw lines up with the flat on the shaft. Make sure both pulleys are the same distance from the Belt Guard or the top faces of both Pulleys are level. Tighten the grub screw.



17. Fit the Drive Belt.

18. **IT IS STRONGLY ADVISED THAT ELECTRICAL WORK BE UNDERTAKEN BY A FULLY LICENSED ELECTRICIAN.** Fit the Switch Box using the screws shown above.



19. Screw the 2 Earth wires to the Saw Body as shown above. The correct assembly sequence is; Split Washer against head of Screw, Flat Washer, 2 Earth wires and lastly the Star Washer against the Saw Body. **AN ELECTRICIAN WILL THEN BE ABLE TO TEST THE MACHINE IS EARTHED CORRECTLY.** Plug the machine in and test the Stop Plate hits the Off Button just enough to switch off the machine without putting too much pressure on the switch. Adjust as necessary.

## WARNING!

Take care — the saw can be unstable whilst being moved on its wheels and the saw Bow may flick up if the handle is lifted too far or the floor is uneven. Only move the saw on its wheels on a level, flat concrete floor.